

Cockerell Rise East Cowes, PO32 6JL

£115,000



IDEAL INVESTMENT!! This one bedroom ground floor apartment is located in the popular town of East Cowes, within walking distance from local schools, bus routes & ferry links to Southampton. This modern apartment consists of a double bedroom with storage space, spacious living/dining room, modern kitchen & bathroom. Outside offers a beautifully maintained communal garden & communal drying area. Other benefits of the property include Double glazed windows, electric heating, allocated parking & visitor parking. This is perfect for a first time buyer or alternatively an investor!!

GROUND FLOOR APARTMENT

1 BEDROOM

MODERNISED THROUGHOUT

COMMUNAL GARDENS

ALLOCATED & VISITOR PARKING

DOUBLE GLAZING



# ROOMS

## Hallway

### Bathroom 4' 11" x 7' 10" (1.50m x 2.38m)

Vinyl flooring. Bath with over head shower. Sink basin & WC. Double glazed frosted window.

### Kitchen 7' 0" x 7' 10" (2.14m x 2.38m)

Vinyl flooring. Modern-fitted kitchen

### Lounge/diner 15' 4" x 11' 8" (4.67m x 3.56m)

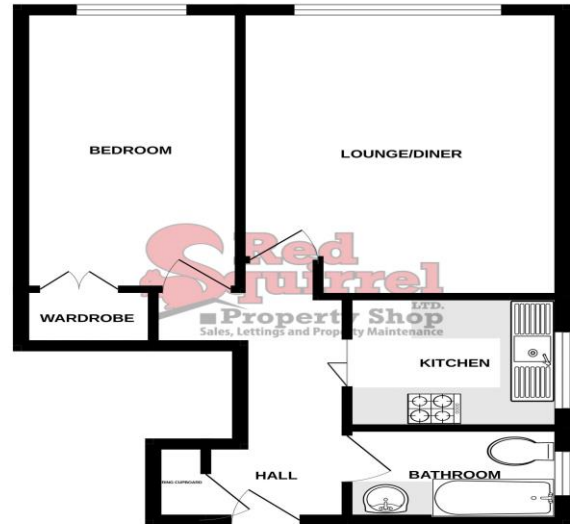
Carpet flooring. Double glazed windows to rear aspect.

### Bedroom 14' 11" x 7' 11" (4.55m x 2.42m)

Carpet flooring. Double glazed window to rear aspect. Storage cupboard.

## Storage cupboard

GROUND FLOOR



Whilst every attempt has been made to ensure the accuracy of the description contained here, measurements of floors, windows, rooms and any other details are approximate and no responsibility is taken for any error or omission in this statement. This plan is for illustrative purposes only and should be checked on site by any prospective purchaser. The services, systems and appliances shown have not been tested and no guarantee as to their operability or efficiency can be given. Made with Metropix ©2023



Energy Efficiency Rating		Current	Potential
Very energy efficient - lower running costs			
(92+)	<b>A</b>		
(81-91)	<b>B</b>		
(69-80)	<b>C</b>		<b>71</b>
(55-68)	<b>D</b>		
(39-54)	<b>E</b>	<b>51</b>	
(21-38)	<b>F</b>		
(1-20)	<b>G</b>		
Not energy efficient - higher running costs			
<b>England, Scotland &amp; Wales</b>		EU Directive 2002/91/EC	

